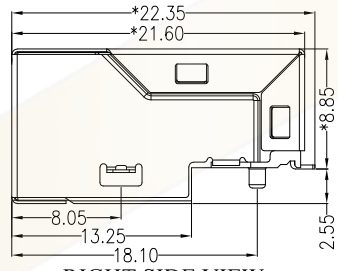
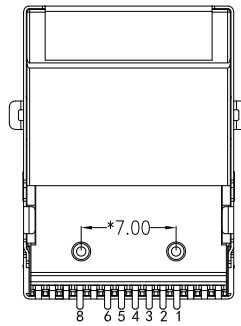


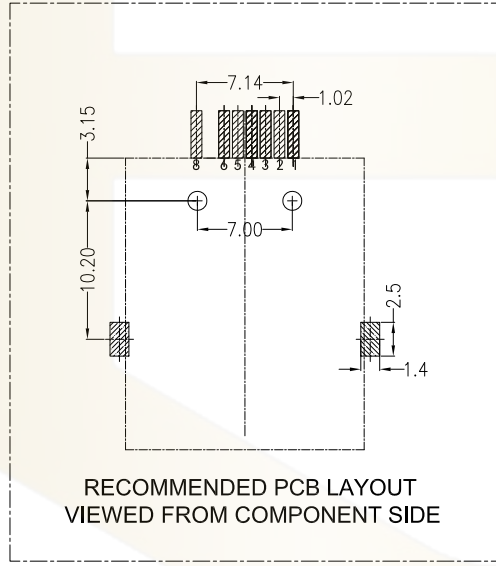
FRONT VIEW



RIGHT SIDE VIEW



BOTTOM VIEW



RECOMMENDED PCB LAYOUT VIEWED FROM COMPONENT SIDE

MATERIAL:

HOUSING: LCP,UL94V-0,BLACK.
 TERMINALS BRACKET: LCP,UL94V-0,BLACK.
 SHIELD: C2680,T=0.20MM,NICKEL PLATING ON ALL AREA.
 TERMINAL: PHOSPHOR BRONZE C5191,T=0.35MM,
 6U" GOLD PLATING ON CONTACT AREA.

MECHANICAL:

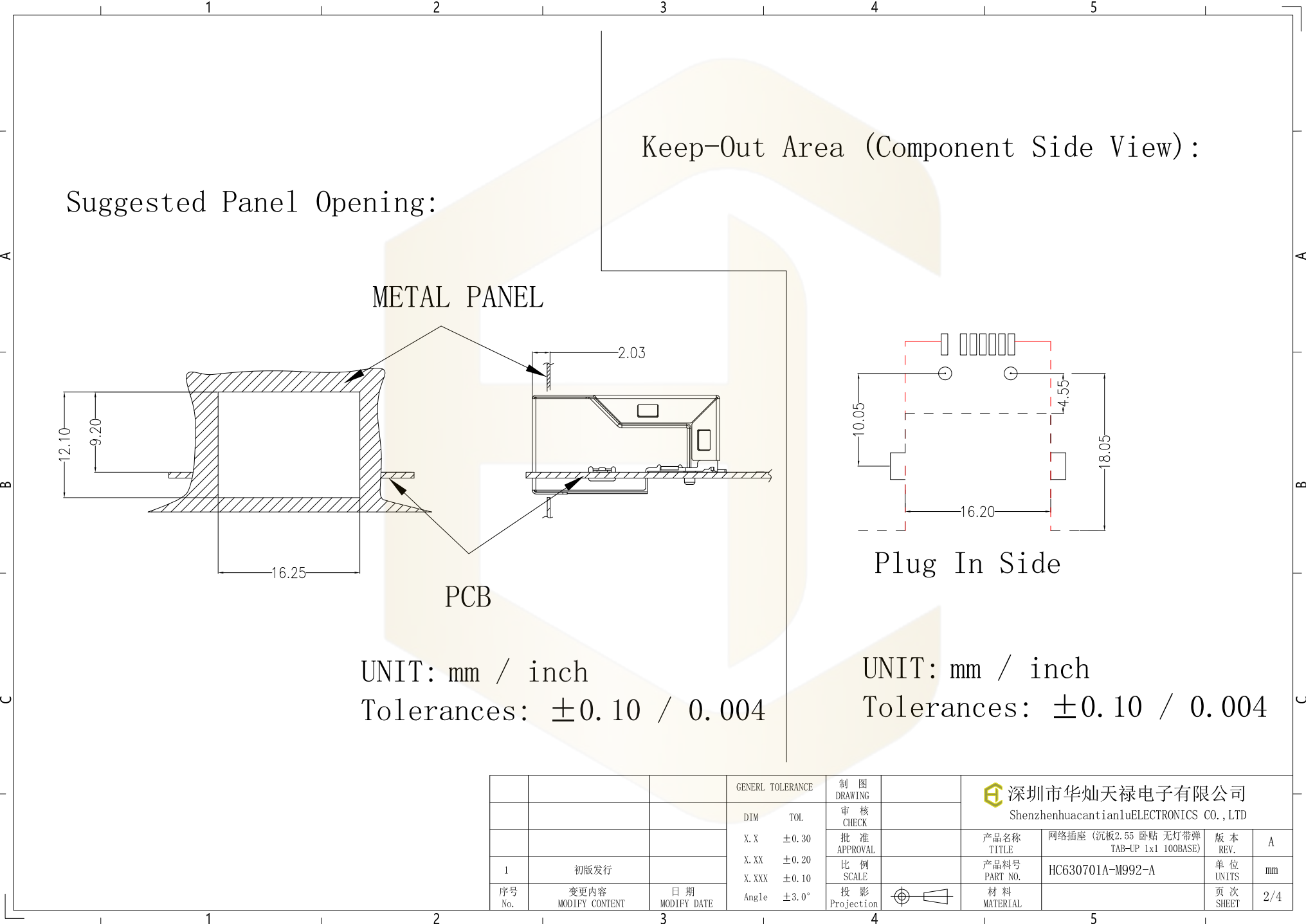
DURABILITY: 750 CYCLES MIN.
 MATING FORCE: 23N MAX.
 OPERATING TEMPERATURE: 0°C~+70°C.
 STORAGE TEMPERATURE: -40°C~+85°C.
 ALL CRITICAL DIMENSIONS WITH "*"

Ordering Information

HC 6* * * ** A - M*** - A

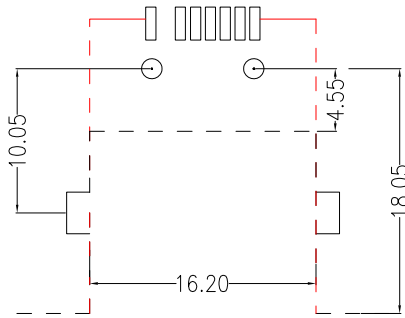
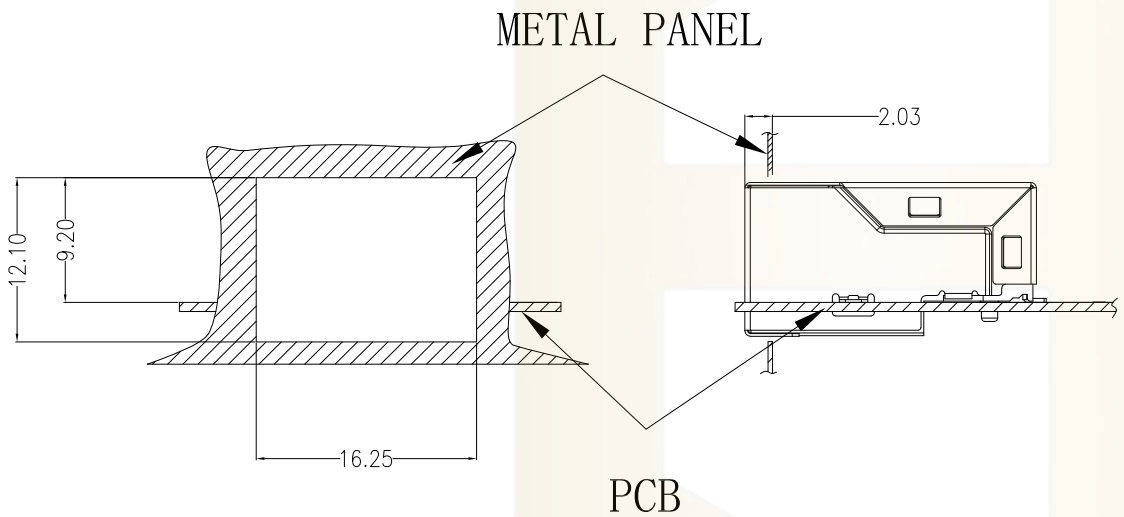
- | | | | | |
|--------|------------|-----|----------|------|
| Type | LED Color | EMI | Ports | 产品序号 |
| ▶ 卧式插件 | ▶ 红 | ▶ 无 | ▶ 1个口 | |
| ▶ 立式插件 | ▶ 绿 (左蓝右绿) | ▶ 有 | ▶ 2个口 | |
| ▶ 卧式贴片 | ▶ 绿 (左蓝右绿) | ▶ 有 | ▶ 4个口 | |
| ▶ 立式贴片 | ▶ 绿 (左蓝右绿) | ▶ 有 | ▶ 8个口 | |
| ▶ 卧式贴片 | ▶ 绿 (左蓝右绿) | ▶ 有 | ▶ 16个口 | |
| | | | ▶ 24个口 | |
| | | | ▶ 32个口 | |
| | | | ▶ 48个口 | |
| | | | ▶ 64个口 | |
| | | | ▶ 80个口 | |
| | | | ▶ 96个口 | |
| | | | ▶ 112个口 | |
| | | | ▶ 128个口 | |
| | | | ▶ 144个口 | |
| | | | ▶ 160个口 | |
| | | | ▶ 176个口 | |
| | | | ▶ 192个口 | |
| | | | ▶ 208个口 | |
| | | | ▶ 224个口 | |
| | | | ▶ 240个口 | |
| | | | ▶ 256个口 | |
| | | | ▶ 272个口 | |
| | | | ▶ 288个口 | |
| | | | ▶ 304个口 | |
| | | | ▶ 320个口 | |
| | | | ▶ 336个口 | |
| | | | ▶ 352个口 | |
| | | | ▶ 368个口 | |
| | | | ▶ 384个口 | |
| | | | ▶ 400个口 | |
| | | | ▶ 416个口 | |
| | | | ▶ 432个口 | |
| | | | ▶ 448个口 | |
| | | | ▶ 464个口 | |
| | | | ▶ 480个口 | |
| | | | ▶ 496个口 | |
| | | | ▶ 512个口 | |
| | | | ▶ 528个口 | |
| | | | ▶ 544个口 | |
| | | | ▶ 560个口 | |
| | | | ▶ 576个口 | |
| | | | ▶ 592个口 | |
| | | | ▶ 608个口 | |
| | | | ▶ 624个口 | |
| | | | ▶ 640个口 | |
| | | | ▶ 656个口 | |
| | | | ▶ 672个口 | |
| | | | ▶ 688个口 | |
| | | | ▶ 704个口 | |
| | | | ▶ 720个口 | |
| | | | ▶ 736个口 | |
| | | | ▶ 752个口 | |
| | | | ▶ 768个口 | |
| | | | ▶ 784个口 | |
| | | | ▶ 800个口 | |
| | | | ▶ 816个口 | |
| | | | ▶ 832个口 | |
| | | | ▶ 848个口 | |
| | | | ▶ 864个口 | |
| | | | ▶ 880个口 | |
| | | | ▶ 896个口 | |
| | | | ▶ 912个口 | |
| | | | ▶ 928个口 | |
| | | | ▶ 944个口 | |
| | | | ▶ 960个口 | |
| | | | ▶ 976个口 | |
| | | | ▶ 992个口 | |
| | | | ▶ 1008个口 | |
| | | | ▶ 1024个口 | |
| | | | ▶ 1040个口 | |
| | | | ▶ 1056个口 | |
| | | | ▶ 1072个口 | |
| | | | ▶ 1088个口 | |
| | | | ▶ 1104个口 | |
| | | | ▶ 1120个口 | |
| | | | ▶ 1136个口 | |
| | | | ▶ 1152个口 | |
| | | | ▶ 1168个口 | |
| | | | ▶ 1184个口 | |
| | | | ▶ 1200个口 | |
| | | | ▶ 1216个口 | |
| | | | ▶ 1232个口 | |
| | | | ▶ 1248个口 | |
| | | | ▶ 1264个口 | |
| | | | ▶ 1280个口 | |
| | | | ▶ 1296个口 | |
| | | | ▶ 1312个口 | |
| | | | ▶ 1328个口 | |
| | | | ▶ 1344个口 | |
| | | | ▶ 1360个口 | |
| | | | ▶ 1376个口 | |
| | | | ▶ 1392个口 | |
| | | | ▶ 1408个口 | |
| | | | ▶ 1424个口 | |
| | | | ▶ 1440个口 | |
| | | | ▶ 1456个口 | |
| | | | ▶ 1472个口 | |
| | | | ▶ 1488个口 | |
| | | | ▶ 1504个口 | |
| | | | ▶ 1520个口 | |
| | | | ▶ 1536个口 | |
| | | | ▶ 1552个口 | |
| | | | ▶ 1568个口 | |
| | | | ▶ 1584个口 | |
| | | | ▶ 1600个口 | |
| | | | ▶ 1616个口 | |
| | | | ▶ 1632个口 | |
| | | | ▶ 1648个口 | |
| | | | ▶ 1664个口 | |
| | | | ▶ 1680个口 | |
| | | | ▶ 1696个口 | |
| | | | ▶ 1712个口 | |
| | | | ▶ 1728个口 | |
| | | | ▶ 1744个口 | |
| | | | ▶ 1760个口 | |
| | | | ▶ 1776个口 | |
| | | | ▶ 1792个口 | |
| | | | ▶ 1808个口 | |
| | | | ▶ 1824个口 | |
| | | | ▶ 1840个口 | |
| | | | ▶ 1856个口 | |
| | | | ▶ 1872个口 | |
| | | | ▶ 1888个口 | |
| | | | ▶ 1904个口 | |
| | | | ▶ 1920个口 | |
| | | | ▶ 1936个口 | |
| | | | ▶ 1952个口 | |
| | | | ▶ 1968个口 | |
| | | | ▶ 1984个口 | |
| | | | ▶ 2000个口 | |

			GENERAL TOLERANCE	制图	深圳市华灿天禄电子有限公司			
			DIM TOL	DRAWING	ShenzhenhuacantianluELECTRONICS CO.,LTD			
			X.X ±0.30	审核	产品名称	网络插座 (沉板2.55 卧贴 无灯带弹	版本	A
			X.XX ±0.20	CHECK	TITLE	TAB-UP 1x1 100BASE)	REV.	
			X.XXX ±0.10	批准	产品料号	HC630701A-M992-A	单位	mm
序号	变更内容	日期	Angle ±3.0°	投影	PART NO.		页次	1/4
No.	MODIFY CONTENT	MODIFY DATE		Projection	MATERIAL		SHEET	



Keep-Out Area (Component Side View):


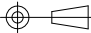
Suggested Panel Opening:



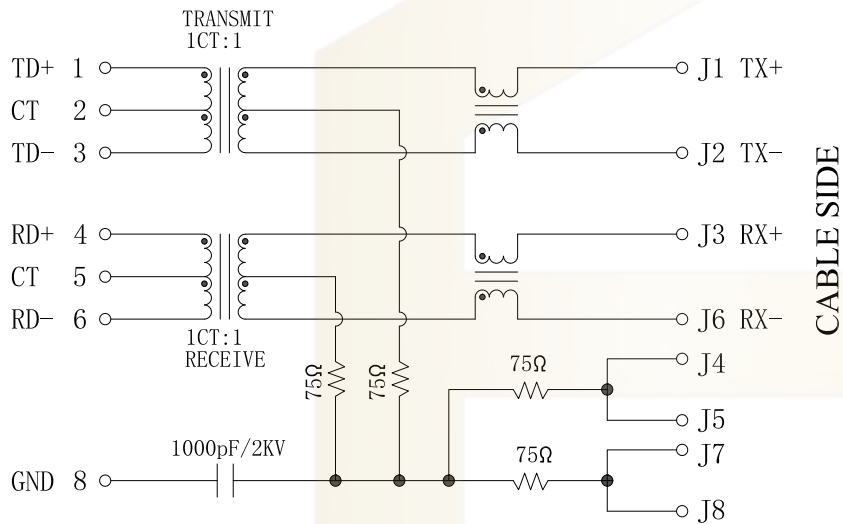
Plug In Side

UNIT: mm / inch
Tolerances: ± 0.10 / 0.004

UNIT: mm / inch
Tolerances: ± 0.10 / 0.004

			GENERAL TOLERANCE		制图 DRAWING		 深圳市华灿天禄电子有限公司 ShenzhenhuacantianluELECTRONICS CO., LTD			
			DIM	TOL	审核 CHECK					
			X.X	± 0.30	批准 APPROVAL		产品名称 TITLE	网络插座 (沉板2.55 卧贴 无灯带弹 TAB-UP 1x1 100BASE)	版本 REV.	A
			X.XX	± 0.20	比例 SCALE		产品料号 PART NO.	HC630701A-M992-A	单位 UNITS	mm
序号 No.	变更内容 MODIFY CONTENT	日期 MODIFY DATE	Angle	$\pm 3.0^\circ$	投影 Projection		材料 MATERIAL		页次 SHEET	2/4

PCB SIDE TO PHY



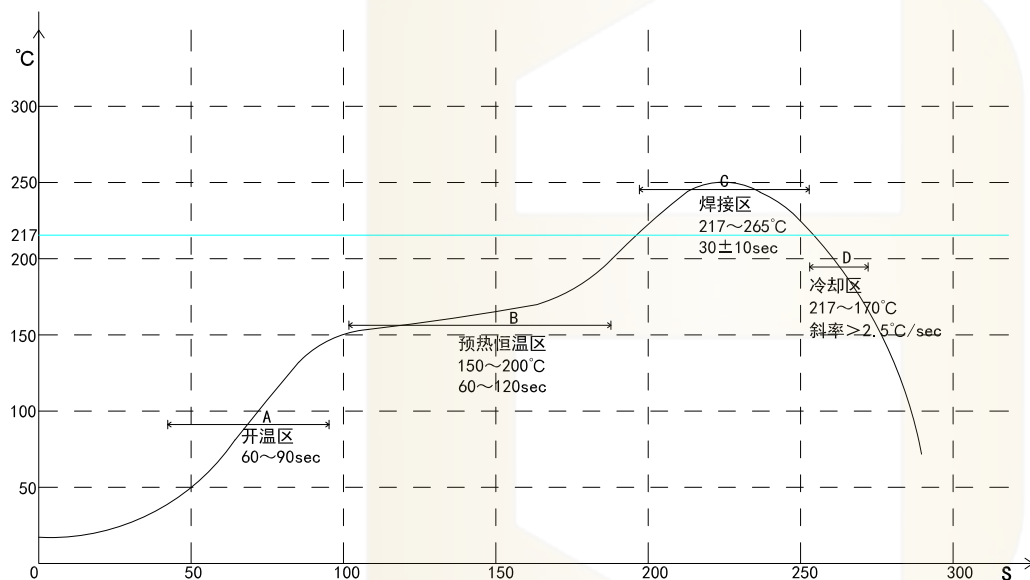
CABLE SIDE

Electrical:


- Turn ratio: 1~3: J1~J2=1CT:1CT(±2%).
4~6: J3~J6=1CT:1CT(±2%).
- OCL: 350uH Min. at 100KHz 100mV 8mA DC.
- Insertion Loss: -1.0 dB Max 1~100MHz.
- Return loss: -20dB Min 1~10MHz;
-16dB Min 10~30MHz;
-12dB Min 30~60MHz;
-10dB Min 60~80MHz.
- Cross talk: -40dB Min 1~30MHz;
-35dB Min 30~60MHz;
-30dB Min 60~100MHz;
- CMR: -30dB Min 1~100MHz;
- Hi-Pot: 1500V AC & 2250V DC
6S 1mA PRI TO SEC

			GENERAL TOLERANCE	制图 DRAWING	深圳市华灿天禄电子有限公司 ShenzhenhuacantianluELECTRONICS CO., LTD			
			DIM TOL	审核 CHECK				
			X.X ±0.30	批准 APPROVAL	产品名称 TITLE	网络插座 (沉板2.55 卧贴 无灯带弹 TAB-UP 1x1 100BASE)	版本 REV.	A
			X.XX ±0.20	比例 SCALE	产品料号 PART NO.	HC630701A-M992-A	单位 UNITS	mm
			X.XXX ±0.10	投影 Projection	材料 MATERIAL		页次 SHEET	3/4
序号 No.	变更内容 MODIFY CONTENT	日期 MODIFY DATE	Angle ±3.0°					

PROFILE OF REFLOW SOLDERING



A. Temperature range of open
 B. Preheat temperature zone
 C. The welding zone
 D. The cooling zone
 Tip temperature: 265±5°C.
 Tip temperature time: 30±10Sec.
 Tip melting point of Sn96.5/Ag3/Cu0.5.

			GENERAL TOLERANCE	制图 DRAWING	 深圳市华灿天禄电子有限公司 ShenzhenhuacantianluELECTRONICS CO., LTD			
			DIM TOL	审核 CHECK				
			X. X ±0.30	批准 APPROVAL	产品名称 TITLE	网络插座 (沉板2.55 卧贴 无灯带弹 TAB-UP 1x1 100BASE)	版本 REV.	A
1 初版发行			X. XX ±0.20	比例 SCALE	产品料号 PART NO.	HC630701A-M992-A	单位 UNITS	mm
序号 No.	变更内容 MODIFY CONTENT	日期 MODIFY DATE	X. XXX ±0.10	投影 Projection	材料 MATERIAL		页次 SHEET	4/4
			Angle ±3.0°	